

Ctrl Alt Reset - The New Together



HT Parekh
FOUNDATION

An Initiative by
HDFC
WITH YOU, RIGHT THROUGH

Social Initiatives 2020-21





Table of Contents

	Theme Note	4
	Chairman's Foreword	6
01	Highlights 2020-21	8
02	Covid-19: Solidarity Together	12
03	Education: Reimagining Learning	20
04	Healthcare: Continuing Access to Quality Healthcare	28
05	Livelihoods: Creating Opportunities for Women and Construction Workers	36
06	Persons with Disabilities: Improving the Quality of Life for Persons with Disabilities	42
07	Protecting Ecosystems: Making Cities Livable for All	48
08	Investing in Pioneer for the Future	52



Ctrl Alt **RESET.**

> *The New Together*

“We might be
socially distanced,
but we are still
closely connected
together”



Ctrl Alt Reset - The New Together

It encompasses the togetherness, courage, dedication and collaboration between the Foundation and its partners in finding new ways of working together and solving new challenges.

It is the celebration of a new kind of strength, energy and togetherness. It is the kind of cooperation and support that the Foundation has always expressed, and its partners have long experienced – and that is now receiving renewed attention.

The economic and social disruptions caused by the COVID-19 pandemic has fundamentally changed everything. Our systems from health to education to livelihoods – are more exposed than ever – leaving many underserved communities facing the brunt of the pandemic.

The past year has been the most challenging year, we found ourselves and our partners at a historic crossroad, resetting some of our fundamental priorities while managing short-term pressures against medium and long-term uncertainties.

For our partners this meant taking courageous steps to continue emergency relief and their critical work as COVID-19 swept the country, ensuring the safety of their staff and at-risk communities and working under extraordinary circumstances. Despite these challenges, our partners were able to pivot and adopt creative and innovative approaches, demonstrating the

foresight and determination required to push ahead in these uncertain times.

The Foundation confronted the pandemic on many fronts and reaffirmed its role as a steadfast supporter and anchor to our partners. In order to flatten the curve, we have looked at medium-term support for communities in their time of need and long-term support to make communities resilient, healthy and safe across the country.

And with our long-term partners, we are reimagining our existing projects to ensure that vulnerable communities are not left out.

Our current reality is anything but normal; we have the unique opportunity to reset and shape recovery, and together with our partners, we can reboot, reflect, reimagine and code a new social contract for an equitable India – we call this the New Together.

Chairman's Foreword

30.11.2021

CTRL ALT RESET....the year so far

We are now nearing the end of 2021 and it has been 20 months since the pandemic broke out. History will perhaps record the year as one of the greatest tests of courage, resilience and compassion for all of us. Looking back, we could divide this into 3 distinct phases – first was the sudden disruption and shock that took place during the first wave in mid-2020, the second entailed adjusting to the new uncertain environment and the third is the rebound from the impact of Covid-19. Will something more than vaccinations and booster shots keep us going or will we have to learn to co-exist with the virus?

At an HDFC Group level, we have seen all our businesses grow, right from home loans to insurance to educational loans, all being need-of-the-hour products, more so now than ever before. The current environment has shown how fragile and uncertain life can be – people now truly understand the importance of life insurance, home insurance, health insurance, and above all the need to own a home. It is where hope begins and the strongest bonds are created. Despite the economy contracting 7.3% in FY21, it has been a record year in our history for home loan disbursements.

Since inception, HDFC recognised the importance and need of providing institutional finance to enable aspiring Indians to become home owners early on in life. This was the very reason HDFC was started 44 years ago – for the provision of a social good. The pandemic has just reinforced our existence with the incremental housing aspiration that we witnessed last year.

Responsibility and Inclusiveness

All successful corporations owe a responsibility to give back to society, irrespective of any regulatory requirements. At HDFC and the H T Parekh Foundation, we have spent significant time and resources over the past 20 months, addressing the relevant community and healthcare needs during the pandemic. When the second wave struck in March 2021, we were morally obliged to step in and undertake a multitude of Covid-19 relief measures, this time largely focused on supporting long term, health infrastructure across the country. Unlike the first wave which was unexpected and sudden, resulting in an economic and humanitarian crisis, the second wave was brutal from a health infrastructure perspective. This time the Covid-19 impact was also felt across both urban and rural India, with the need for hospitalisation being much higher.

While we stood committed to supporting people and the government on fighting Covid-19 for most of the year, as the economy opened up and lockdown restrictions were removed, we pivoted back to our core programmes focused on Education, Healthcare & Protection of Ecosystems.

We undertook in-depth discussions with all our partners to realistically evaluate programme implementation with a critical lens of assessing on-ground realities. We realised the importance of supporting civil society organisations during this tough phase, by stepping in as a funder to support innovation, identify gaps across sectors and assess the real on-ground needs of our partners. Strengthening our in-house monitoring function became imperative, as pandemic

restrictions allowed limited mobility through most of the year. Keeping in mind our inclusive lens, our focus was on the most vulnerable communities affected by the pandemic – children, senior citizens, adolescent girls and persons with disability.

Lessons from the pandemic

The big question is whether 2022 will be the year when the world can decisively move on from the pandemic. It's that time of the year when many begin to crystal gaze and think about what 2022 could define. Any assessment at this juncture will continue to have blind spots, simply because we still don't know how the virus behaves.

That said, the pandemic so far has brought about learnings and positive change:

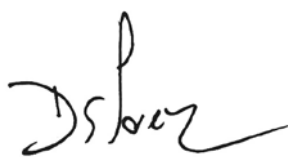
- **Importance of technology:** This cannot be over emphasised. As much as we would like to balance out the extent of technology we use in our lives, the pandemic has opened our eyes to technology in ways unseen and unheard of before. Barring a few months, trade, commerce and business continued to operate in India in spite of the pandemic, all due to the power of technology and communications.
- **Encourage Research & Development, Entrepreneurship:** A big change I have personally witnessed is the scale at which start-up companies and first generation entrepreneurs have grown during the past 2 years. The speed of pharma innovations including the development of the Covid-19 vaccine, affordable medical equipment for testing & diagnosis, were all possible due to successful investment in R&D.
- **Concern for the Environment:** A deep concern for the environment and understanding of climate change has grown over the past 2 years, amongst children, young adults and seniors. People across the world have had considerably more time to re-orient their life, thought process and affirm positive action on climate issues likely to affect man and planet, due to the adverse effects of climate change.
- **Open your purses:** There has been an outpouring of funds and in-kind donations by corporates, individuals and foundations, domestic and international, since the beginning of the pandemic, reinforcing my belief that philanthropy should become a habit and not be an option.

Onward and Upward

We are at inflection point and our resilience and courage will take us forward. Although our current reality is anything but normal, we have the unique ability to reimagine, reboot and reset our lives – Ctrl-Alt-Reset: The New Together !

At HDFC and the Foundation, our gratitude jar is overflowing. My best wishes to the Foundation's non-profit partners, stakeholders, employees & families.

Onward and Upward for 2022.



Deepak S. Parekh
Chairman

01.

Highlights

2020-21

“We are a progressive, impact-driven, philanthropy foundation guided by the principles of inclusion, commitment, excellence, integrity and respect”



Ziaa Lalkaka
Chief Executive Officer



Ujjwal Banerjee
Education



Satyavati Kotian
Administration



Evans Rebello
Communications



Sonal Alvares
Environment



Ninad Salunkhe
Healthcare



Sweety Thomas
Education, Disability



Vrajesh Modi
Finance & Accounts



Deepa Walawalkar
Monitoring and Evaluation



Upahar Pramanik
Healthcare



Meenu Thomas
Education



Vishal Gharat
Administration

Our Philanthropic Credo

The H T Parekh Foundation envisions an inclusive India where vulnerable communities have the access and opportunity to transform their lives and move from a state of surviving to thriving.

Our philanthropic culture is based on the tenets of mutual trust and respect, integrity and a humility around giving. We stand in as a long-term supporter to our partners, that are working to enable India’s excluded children, women and youth overcome poverty, disability gender-discrimination and live with purpose and dignity.

The H T Parekh Foundation’s philanthropic activities are aimed at enhancing the quality of life of people from marginalised and vulnerable communities and creating a stronger and inclusive India.

The Foundation’s activities contributes to the realisation of the Sustainable Development Goals (SDGs) through the following



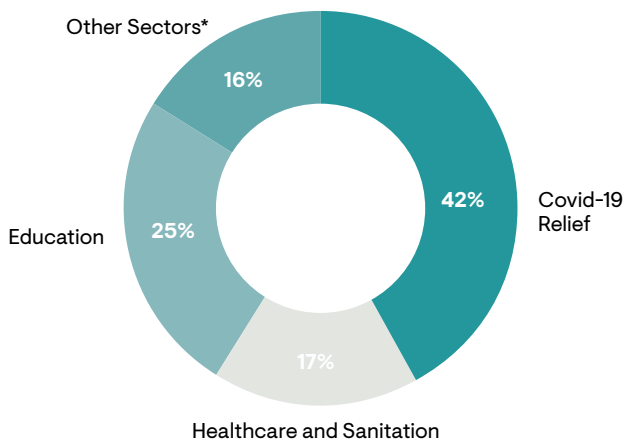
Our Reach

900,000 +
Individuals Reached

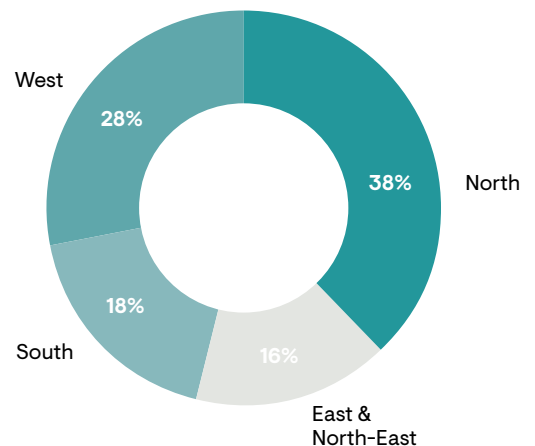
107
Partners

27
States

Sector Break-up



Regional Break-up



*Other Sectors includes grants made Livelihoods, Persons with Disabilities & Environment Sectors

New Initiatives

April 2020



COVID-19 Relief

We began our COVID-19 relief work as a part of our Corporate Social Responsibility (CSR) commitment along with additional funds from voluntary employee contributions. The Foundation enabled the execution of this relief work.

July 2020

Cross Learning Workshop: Education

Conducted a virtual workshop for core education partners to:

- Share ground realities and challenges faced by each other
- Exchange ideas and innovations partners have been working on
- Identify strategies that can be contextualized and implemented by their organizations
- Create and share resources that can be useful for all partners

COVID-19 Impact Assessment

RTI International supported us to understand the exponential impact of our overall COVID-19 relief contributions around alleviating the Human & Health crisis faced by socio-economically vulnerable sections of society.

August-September 2020



Portfolio Alignment: Reset, Reflect, Reimagine

We took this time to understand how COVID-19 has affected our key focus areas, the effect it had on our partners and its long-term impact. We revisited our strategy to include medium to long-term support for sectors affected by the pandemic.

Although 2020 presented extraordinary challenges, we have used this time to undertake new organisation-led initiatives, sharpen and pivot our strategy, think about how best to create impact and scale organisations we support.

November 2020



Support for Migrants post COVID-19

Supported collaboratives to ensure system level changes for migrants to build resilience and protect their livelihoods.



New Focus Areas: Sustainable Habitats

Reimagined our Environment initiatives into a new focus area - Sustainable Habitats, aiming to minimize pollution and increase conservation and reuse/recycling.

December- February 2021



Building a Monitoring and Evaluation Framework

Engaged with The Bridgespan Group to build a Monitoring and Evaluation (M&E) framework. This was done with the intention to

- Align critical priorities for partner success
- Track health of key indicators for priorities
- Report on information and data throughout projects life cycle
- Communicate Impact to internal and external stakeholders
- Weigh the efficacy and impact of our support in a project
- Identify the partner successes and investigate challenges in a timely way
- Make data and evidence backed decisions

March 2021



Foundation Launches New Website

Interactive website that brings together the Foundation's legacy, journey and evolution; and updates on our latest initiatives and areas of support.



CNBC's The Changemakers

CNBC-TV18 "The Changemakers", showcased the Foundation's work, some of the impact we are trying to make and gave a sneak-peek into our future plans.

02.

COVID-19

Solidarity Together



Our COVID-19 Response

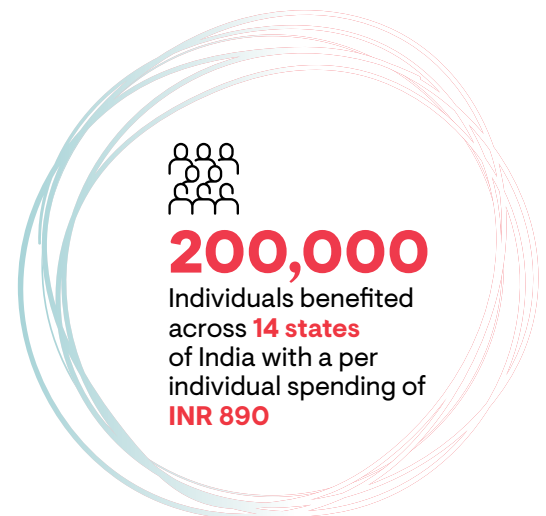
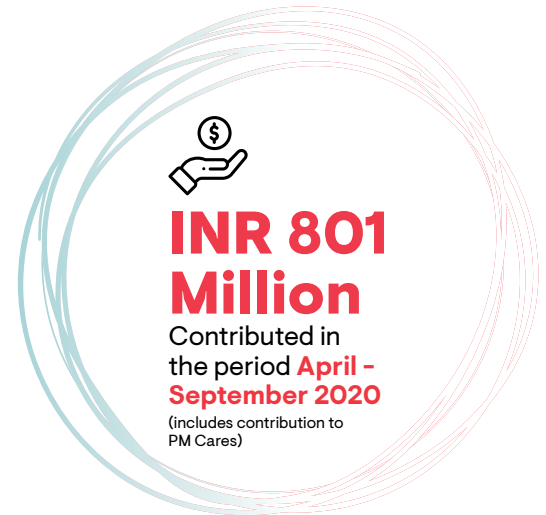
We are experiencing a very unique and unprecedented situation due to the COVID -19 outbreak and subsequent lockdowns in the country. The multiplicity nature of COVID-19 needed an all hands in approach. Corporates, philanthropists, civil societies and individuals all came together and worked in unison to support immediate relief efforts in saving lives in addition, the crisis had already hit major social and economic systems, and many vulnerable communities experienced a disproportionate share of the disruption—from morbidity and mortality to unemployment and loss of livelihood. Corporate India and nonprofit's response to the COVID-19 pandemic has shown the sector at its best.

Corporates have been responsive, engaged, and agile; coming together to donate funds, leveraging their expertise and networks toward relief efforts to help flatten the curve in the short term and to address the inequities the crisis will exacerbate over the long term. Nonprofits have had to pivot their way of operating. Many of them have adopted creative and innovative approaches to executing their missions.

Employees of front-line organizations also faced personal risks due to daily interactions with clients and possible COVID-19 exposure. These realities have adversely impacted the mental health of employees in this sector. The challenge—and opportunity—for the sector will be to make those features stick.

The Foundation's story was no different, as the events surrounding the Covid-19 pandemic evolved, our team worked with the central government, certain state governments, local civic authorities, healthcare experts, NGO partners (both new and existing) and other development sector players to understand areas of critical need, be it geographies with rising cases or at-risk populations.

As the situation on ground was dynamic, the Foundation has acted on priority to identify and support the following strategic interventions focused on building the resilience of vulnerable and marginalised population groups who were significantly impacted.





Our relief work was into 3 broad categories - distributing dry ration, supporting cooked meals, and healthcare support. HDFC's contribution ensured that we have helped in addressing social and economic challenges faced by vulnerable communities, as well as supporting the healthcare system in a timely and humane manner.

We have worked with 27 Nonprofits with strong community connects. The ability for non-profits to continue to serve their communities is a testament to their passion, the personal sacrifices they and their teams had made, not only risking their lives, but pouring their heart and soul into their organizations. This included long hours, maintaining a flexible outlook and mental tenacity. Mission, passion, will and determination have been integral to sustaining non-profits during this time.

“I take this opportunity to convey my gratitude for ventilators donated to Assam Rifles through CSR. This noble gesture at a time of grave crisis caused by the COVID-19 pandemic will undoubtedly save invaluable lives in the distant North East India”

- Lt Gen Sukhdeep Sangwan, AVSM, SM**
Director General Assam Rifles

Our Reach



Healthcare

- 1,05,000 PPE Kits
- 2 COVID-19 Isolation Centers
- 2,15,000 Masks
- 18 Ventilators
- 4,200 patients monitored during home quarantine



Community Outreach

- 10+ Lac Cooked Meals
- 27,000+ Rations Kits
- 1.62 Lac Individuals



Employee Contributions

- 16,100 Safety Kits for Police
- 360 Patients treated
- 1,600+ Rations Kits
- 195 student and teachers through tech support
- 50,000 Migrants through Rozgar Dhabas



Supporting

- Elderly People
- Person with Disabilities
- Migrants
- Healthcare Workers
- Tribals Community
- Construction Workers
- Single Women/Widows
- Police Personnel

Type of Support



Dry Ration:

Distribution of dry ration and hygiene kits to households whose income had been directly affected due to the lockdown



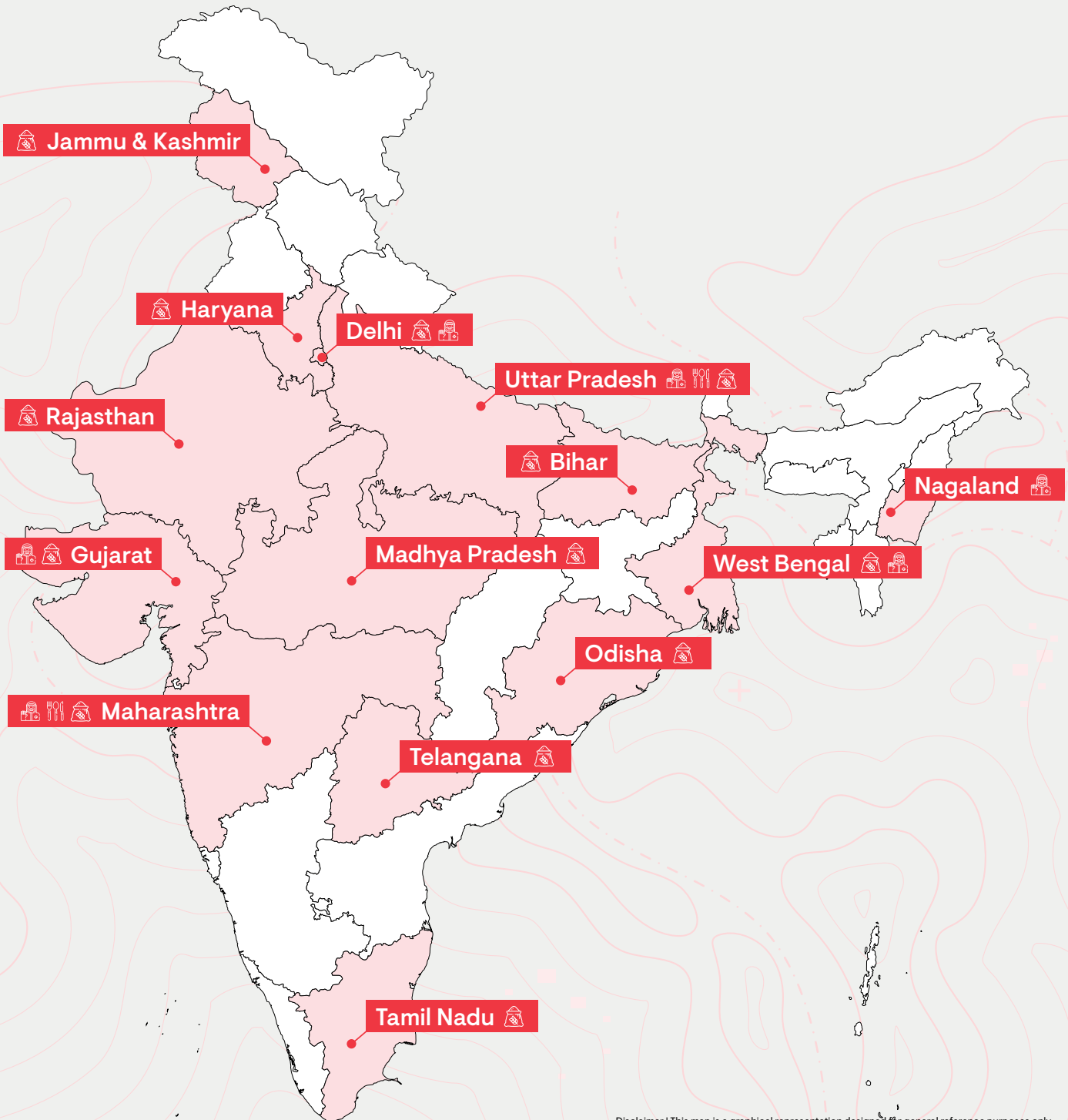
Cooked Meals:

Cooked meals to individuals comprising of primarily stranded migrants



Healthcare Initiatives

Procurement and distribution of curative equipment (e.g ventilators), protective gear to healthcare workers and police personnel and supporting isolation wards



Our COVID-19 Activities

An adverse effect of the lockdown meant that millions of workers had to deal with the loss of income, food shortages and uncertainty about their future. Following this, many of them and their families were going hungry, and many migrant workers began a mass exodus walking back home, with no means of transport due to the lockdown. In response, the Foundation took to supporting the distribution of dry ration and cooked meals to address food security and ensure that during this time of great uncertainty, we could provide nutritious food to the most vulnerable people and their communities—including many who were facing hunger for the first time.

Relief Activity #1:

Dry Ration & Hygiene Kit Distribution

A direct impact of the COVID-19 lockdown was the loss of livelihood for those dependent on daily wages.

Through the Foundation, 24 community-based organisations were rapidly mobilised to distribute dry ration and hygiene kits to these vulnerable communities.

Output

- **27,000** Dry Ration and Hygiene Kits distributed to beneficiaries comprised of Persons with Disabilities (PwD), elderly, single women (widow/ separated), daily wage earners, migrant construction workers, waste picker and tribal communities.

Outcome

- **1,62,000** Individuals Reached from various vulnerable and marginalised communities across 13 states of India
- **31%** of the daily calorific needs of beneficiaries were fulfilled for a 21-day period.

Impact

- **68%** Of household expenditure reallocated to other immediate needs.
- **27,000+** families were able to reallocate their usual household expenditure on food, to other immediate needs for one month



Stories from the Ground



Trinath Sethy and his wife had walked for almost 3 days and 3 nights covering 275 km from Visakhapatnam to reach their hometown Kularsing in Nandapur block, Odisha.

They and many others from their village generally migrate out as laborers in construction sites, leaving their children with their old parents. After reaching their hometown, they had to stay at quarantine centers for 14 days and even after this quarantine period they had no income source. In these difficult times, our support has helped families like Trinath with dry ration for the duration of 30 days.



Relief Activity #2:

Cooked Meals Distribution

The lockdown and loss of livelihoods led to India witnessing one of the largest forced human migration of recent times. Due to the lockdown, most migrants were stranded with no sustenance or shelter and unable to return to their homes. They were also at a high risk of being infected. HDFC supported 3 organisations for the distribution of cooked meals.

Output

- **10,00,000** cooked meals distributed to vulnerable and marginalised population groups like migrant workers, daily wage earners and homeless persons

Outcome

- **24,000+** Individuals - Reached primarily comprising stranded migrants
- **100%** of recommended dietary allowance (calories) addressed by cooked meal package (average 2 meals/ day)
- **90%** more nutritious than a typical daily calorie intake for these beneficiaries

Stories from the Ground



Our partnerships helped reach nutritious cooked meals to stranded laborers and daily wage earners across Thane, Vikhroli, Mumbra and Bhandup in the Greater Mumbai region.

A meal packet consisting of a vegetable 'khichdi' or 'pulao' (Indian rice preparations) were distributed across the locations through volunteers and the local administration. This program was unique since it not only provided the much-needed food relief for stranded communities but also ensured that the women entrepreneurs did not lose out on their income during the lockdown. The program ensured distribution of 25,000 meals over 31 days.

The COVID-19 crisis presented new challenges across public health, and the outcome of the pandemic depended on our preparedness to contain the spread of the virus. Frontline healthcare workers, Doctors, nurses, hospital staff, police personnel and sanitation workers were relentlessly working round the clock on the frontline against the COVID-19 outbreak, risking their lives to safeguard ours - they needed protective equipment and medical supplies, which at that time was in short supply.

The Foundation's healthcare support included providing masks and personal protective equipment for healthcare workers, police personnel and community workers; while our support to the efforts of government and charitable hospitals included curative equipment such as ventilators and dedicated isolation centers.



Relief Activity #3:

Healthcare

Healthcare workers and police personnel were at the forefront of this crisis, with a limited number of PPE kits available initially and a high risk of infection. Our interventions focused on procuring and distributing personal protective gear for healthcare workers and police personnel – two communities who were overburdened by the scale of the crisis. Additionally, we donated specialised ventilators to support Delhi, Nagaland and West Bengal’s healthcare efforts in their response to COVID-19.

Output

- **16,000+** Police personnel protected
- **18,000+** Healthcare workers protected
- **14%** of reported need for protective gear for one month across 35 hospitals of Delhi, Gujarat and Maharashtra fulfilled by contribution towards healthcare workers
- **18** ventilators address respiratory ailments including COVID-19

Impact

- **Avoidance of Medical Expense:** 408 million of estimated medical expenses avoided due to reduced likelihood of these healthcare workers and police personnel to contract COVID-19
- **Improved mental wellbeing:** 70% Estimated reduction in occupational psychological stress of these beneficiaries by ensuring availability of protective gear thereby preserving their mental health and enhancing productivity

Stories from the Ground



The rising COVID-19 cases amongst the police personnel and related security forces had become a matter of concern as they worked day and night, including in and around containment zones. Keeping in view personal safety of these COVID-19 Warriors, HDFC through its partner Praja Foundation distributed 10,600 protective gears (masks, gloves) and 4,240 liters of hand sanitizers to 93 police stations across 13 zones of Mumbai.

“The safety masks were extremely important for us because we worked in the containment zones. We managed to deliver the masks, gloves and sanitizers which were of an excellent quality to the police stations for their use.”

- Asst. Police Inspector, Mumbai Police

Reset.

Together with our partners, we have reflected on the events unfolding on-ground and how they affect the communities we serve across our priority areas.

Work together. **But Differently.**

To overcome the strong digital divide that still exists, we will need to adopt innovative ways of facilitating access to education for underprivileged children with our education partners. To build resilient healthcare system, we need to enhance the capacity of health workers and strengthen health infrastructure. To address the long-term livelihood crisis, we need to support collaboratives and support the welfare of migrant workers and women focused livelihood programmes.

03.

Education

Reimagining Learning



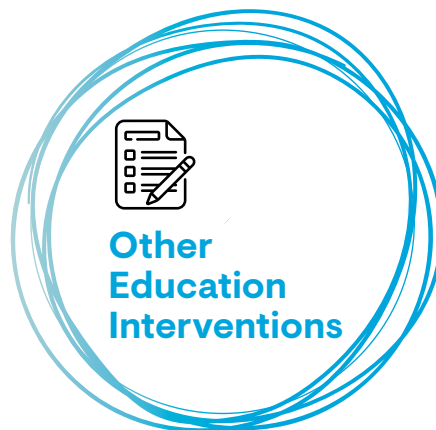
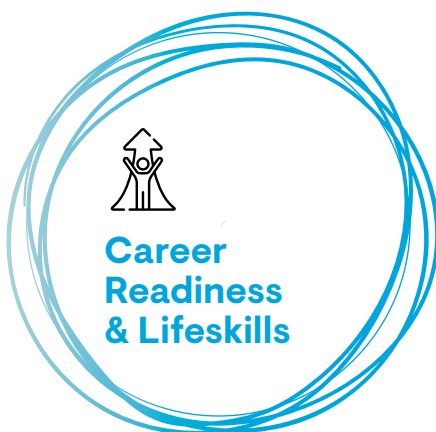
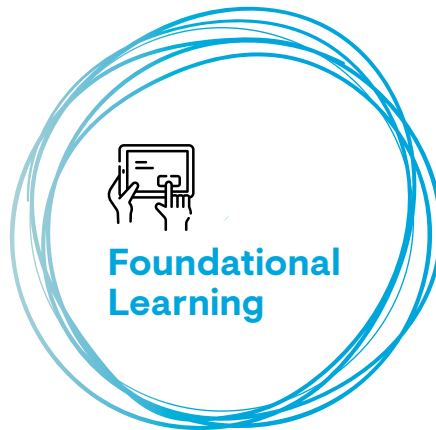
Reimagining Education and Learning Outcomes

The closure of schools across the country due to the COVID-19 pandemic brought on a dramatically different school experience for children and teachers, who had to collectively navigate a new way of learning, and expanded the roles and responsibilities of parents as well.

While a lot of schools have transitioned to online teaching, many were unable to make this shift, as they did not have the infrastructure to conduct online classes, most of their students did not have access to devices or the internet. In person classroom vs online pedagogy differ vastly and required teachers to go through very rapid upskilling to be able to conduct online lessons. Parents had to take on the role of teachers at home, and for organisations and schools engaging with parents became extremely important as well as challenging.

A good learning environment is one that facilitates peer to peer learning and collaboration, and in the current situation students were alone at home and were not getting the required social stimulus, in addition to the paranoia the pandemic created adversely impacted their mental health.

This sudden disruption required our partners and us to reimagine education delivery, improve remote learning and focus on developing new and innovative strategies so that school systems can be more equitable and resilient across our priority areas



1.**Challenges Faced****No Physical Access to Schools and Students**

Students are less likely to receive the educational support and extra services they need.

Drastic loss of Learning

- Teachers would not be able to ascertain a student's learning ability before being promoted to the next grade
- Potential increase in drop-out rates especially for adolescent girls and families with financial constraints

Teaching Skillsets

- Teachers need to build capacity for online teaching methodologies
- Potential burnout for teachers due to increased work hours

2.**Impact on Grantee Partners****Projects:**

Re-evaluated support to understand ability to reach students and teachers

Extensions:

Slowdown in activities on ground required additional time. Grants were given extensions and re-purposed to meet on-ground needs

Programme Pivot:

Supported digital content development and dissemination across all priority areas.

3.**Measures Taken****Technology Infrastructure:**

Supporting devices for students

Realign Priorities:

Balance between learning outcomes, increasing engagement and attendance of students in online classes, such that they are using their time productively and do not drop out.

Content Creation:

Contextual, relevant and grade appropriate digital content for teachers, parents and students

Mental Health:

Increased focus on mental health of students, teachers and caregivers

2020-21 Education Highlights

We supported opportunities to promote learning outcomes that were otherwise getting lost due. Through our partners, we were able to reach a greater number of students, build the capacity of teachers and support initiatives to mitigate the effect of COVID-19 on school going children.



3,60,000+

Individuals Reached



3,28,000

Students



31,500+

Educators



23,000+

Schools



195

Learning and Teaching
Devices





Early Childhood Education

Challenges:

Covid-19 suspended normal childhood and made it challenging for educators to focus on strengthening a child's foundation for lifelong learning and wellbeing.



Our Response:

Focus on training educators and building teacher capacity with the skills required to transition to effective online and remote learning.

Our Support

1. Pratham Education Foundation

Every Child In School and Learning Well

Aimed at developing children's physical, socio-emotional, cognitive and language skills, we supported Pratham's partnership with the government of Haryana and Punjab to train teachers, district officials and state officials on holistic ECE methods, and supported states in deploying their strategy during the COVID pandemic. The partnership supports the training of the supervisory cadre equipping them with progressive pedagogical practices, content, monitoring and evaluation frameworks. These supervisors then train Anganwadi workers on how to implement these practices in Anganwadis across the states

Outcomes

- As a part of the 'Thodi Masti, Thodi Padhai' campaign, remote learning package reached children and parents in Anganwadi's across Punjab and Haryana
- **767** Government Supervisory Cadre members trained on early childhood methodology and content



Training session

2. Quality Education Support Trust (QUEST)

Enhancing Learning Experiences

As part of QUEST's Palavee programme (training and capacity building of anganwadi workers), we have supported the customisation of the Gatuwith app, a learning management system for Anganwadi workers.

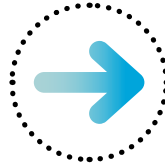
The app will help streamline various training and input processes and teaching learning material for Anganwadi workers. When completed this app will be used to aid educators in remote learning situations, provide resources, give feedback, track progress of teachers and increased parent engagement.

Foundational Learning



Challenges:

Teachers did not have appropriate skills to adapt to online teaching methodologies or appropriate content to teach and engage with parents. At the same time, many were trying to understand the impact of trainings delivered online in classroom practice and understand if actual learning was taking place.



Our Response:

Leveraged technology for learning (smart devices, text messages, physical worksheets and virtual meetings) to engage with students and parents, and supported the development of content for parents to engage with their children.

Our Support

1. Central Square Foundation (CSF)

Innovation In Education

To improve learning outcomes of all children and support access to remote learning during the COVID-19 pandemic, we supported 3 critical Ed-tech interventions

- **Tic Tac Learn:** a free for all online video-learning library of 10,000 videos for Maths and Science in five languages - Hindi, English, Telugu, Odiya and Marathi in the K-12 segment.
- **Rocket Learning:** A WhatsApp based solution targeted at parents of children in the age group of 3-8 years, to drive parental engagement and build foundational skills in children
- **Top Parent:** A smart phone app targeted at parents from low-income communities, that aim to increase access to learning through high-quality curated age-appropriate resources, monitoring tools and gamified nudges to increase engagement



2. Purkal Youth Development Society (PYDS)

Toward a Purposeful Life

With an aim to reduce loss of learning for children in far flung geographies, the Foundation has supported PYDS with the procurement of learning devices such as tablets for children across grades 6th to 12th in Uttarakhand, who have no access to devices to continue online schooling. PYDS has adapted to remote learning techniques and realigned the curriculum for this year to focus on both academic and co-curricular activities that can be done by students at home with remote guidance from their teachers.

← continued from [Foundation Learning](#)



Challenges:

In the absence of digital and technology interventions, there were concerns by students, teachers, and parents, especially those working in difficult terrains and geographies.



Our Response:

To ensure the continuity of the learning process during the lockdown, the Foundation responded by leveraging community resources to bridge the digital divide.

Our Support

3. Foundation To Educate Girls Globally

Empowering Girls to Lead and Learn

Girls' education has been specifically challenged by the COVID-19 pandemic, especially for girls from low-income households and rural areas. Many girls may drop out of school as a result. We supported Community Based Learning Camps or Camp Vidya for students in Grades 3 -5. Learning was conducted by Field Coordinators and Team Balikas (community volunteers) across villages. Through the presence of these field teams, Educate Girls has been able to adapt to the current scenario, identify needs of their communities and develop programs accordingly.

Outcomes

- **25,661** girls identified for enrollment across Barwani and Khandwa districts
- Total number of Camps organised **1,700** camps benefiting **14,000** children
- Life Skills Training for **20,956** adolescent girls across **1,059** villages in Barwani and Khandwa



At Educate Girls camp



At Educate Girls camp



At Educate Girls camp

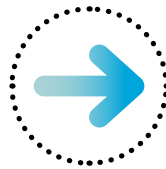
“Building a good foundation in the early years of a child’s life will not only help them reach their full potential but will help build better societies.”

Career Readiness and Life Skills



Challenges:

The COVID-19 crisis has made the school to work transition more challenging with an ever changing world of work and an increased risk of students being able to complete education



Our Response:

To help students navigate the uncertainty of career options in a post-covid future, we supported partners that were working on advocating for systems change as well as providing information to students to make informed decisions.

Our Support

1. Antarang Foundation

Building Self-reliance in Youth

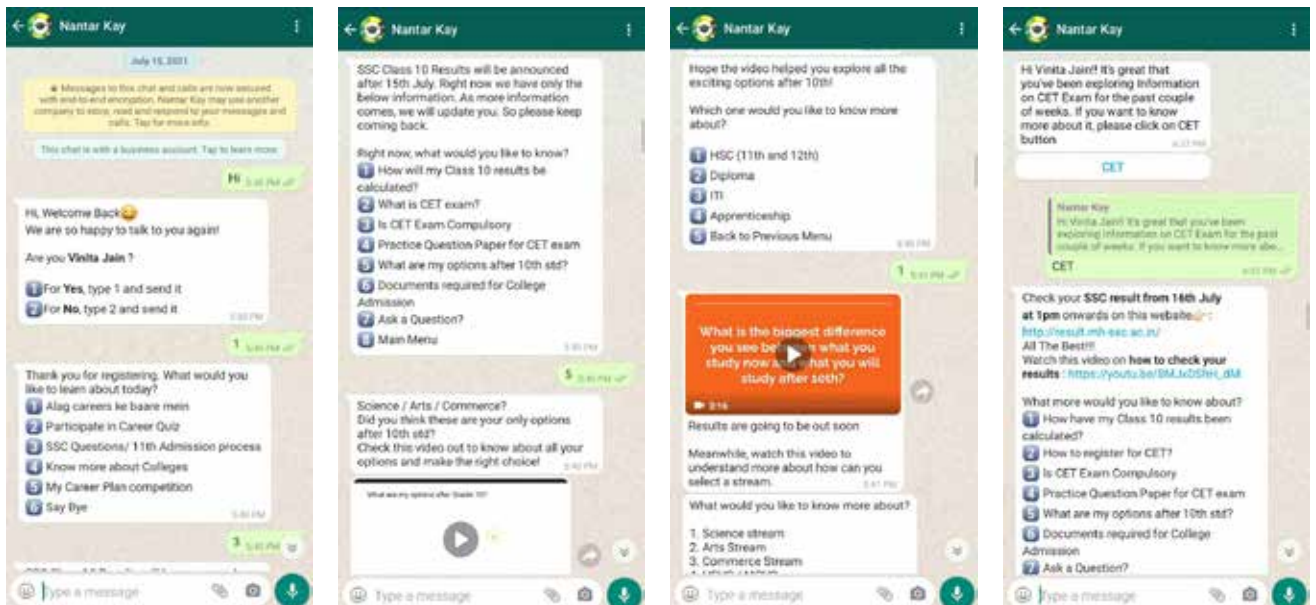
Supported the development of a WhatsApp Career Chatbot called "What Next?" that connected students in Grade 9 and 10 in government schools with relevant career options. Students could get information about the different careers available, the type of job roles and their responsibilities and what education streams they would need to do to get into a career of their choice.



Chatbot

Outcomes

- What Next endorsed Municipal Corporation of Greater Mumbai (MCGM) and rolled out across all its schools
- The chatbot saw over **2,500** users within a month of its launch with **85%** of the users rating it as excellent



04.

Healthcare

Continuing Access to Quality Healthcare and Health Outcomes



2020-21 Healthcare Highlights

While the COVID-19 induced nationwide lockdown restricted the spread of the disease, it impacted provision of other key healthcare services.

Treatment for COVID-19 patients took the centre stage in healthcare, affecting postponement of elective surgeries and treatment for critical diseases. Suspension of health camps, Aanganwadi Centre to adhere to social distancing norms affected delivery of maternal child health and nutrition (MCHN) services.

Given the critical role of healthcare providers and frontline workers in the pandemic response, it was necessary to keep them safe, while ensuring that critical services for women, children and adolescents continued.

1.

Nutrition

Supported programmes to improve nutritional status of adolescent girls, mothers and children and ensure that nutritional gain achieved were not lost due to COVID-19

2.

Cancer Care

Supported programmes to sustain access for early diagnosis and quality treatment of cancer, and increase survival rate among children and women.

3.

Other Healthcare Initiatives

Supported programmes on treatment of congenital heart defects, heart transplants for children and treatment of avoidable blindness.

Supported scalable projects on healthcare innovation through technology incubators



113,108

Children



92,923

Women

COVID-19 and Delivering Maternal, Child Health and Nutrition

1.

Challenges Faced

Limitation in delivery and uptake of MCHN services

Fear of COVID-19 infection affected coverage/ uptake of MCHN services at Aanganwadi Centres and Crèches at construction sites

Limited opportunities for conducting onsite training and capacity building of frontline workers

2.

Expected Long Term Impact

Disruptions in Healthcare Services leading to

- Increase in malnutrition
- Increased high risk pregnancies
- Increase in maternal and child mortality rates

3.

Measures Taken

Alternate Methods of Service Delivery

- Direct to home distribution of nutritious food supplements for children, adolescent girls and pregnant and lactating mothers as Creches and Aanganwadi Centres were closed
- Increased tele-counselling and monitoring of nutrition for pregnant and lactating mothers, antenatal check-ups, immunization, referrals for deliveries

Priority Groups

- Providing accurate information to pregnant and breastfeeding women
- Prioritizing low socio-economic households for fortified food supplements, who lost their livelihoods due to COVID-19

2020-21 Nutrition Highlights

Challenges:

The disruptive effects of the COVID-19 pandemic have intensified impact on the burden of malnutrition among children, especially from the vulnerable and economically poor families.



Our Response:

Supported interventions such as providing age appropriate nutrition through supplementary food and fortified food supplements and capacity building of frontline workers within the context of COVID-19 pandemic.

Our Support

Delhi Mobile Crèche

Tacking Malnutrition, Saving Lives



Distribution of nutrition kit for children

Due to COVID-19 situation children of migrant construction workers could not access fully functional crèches. We supported delivery of age appropriate nutritional kits to every child at their homes through community volunteers, ensured immunization camps while following COVID-19 protocols and ensured growth monitoring through online & onsite methods

Through our support, we have been able to improve the nutritional status of ~ 1,450 children of construction workers at 22 construction sites in Delhi NCR, Bangalore and Chandigarh

Outcomes

- 93% children maintained and improved nutrition status
- 80% accessed supplementary diet (made of roasted chick-pea, rice, sugar and wheat), bananas, extra oil, and milk)
- 90% children got immunized



Growth monitoring



Multil-Vitamins for children

← continued from 2020-21 Nutrition Highlights



Provision of FBF for pregnant woman through direct distribution at home



Nutrition volunteer providing information to pregnant woman and lactating mother about FBF

Karnataka Health Promotion Trust (KHPT)

Building Empowered and Healthy Communities

As social distancing restricted home visits by frontline workers in communities, we supported the training of adolescent girl volunteers (called Spoorthis) to visit small group of households and distribute Fortified Blended Food (FBF), essential for addressing maternal and child nutrition

This has helped reduced malnutrition among children below 3 years, adolescent girls, pregnant and lactating women from ~23,000 most vulnerable households in Koppal district

Outcomes:

- Improved consumption of FBF by and Dietary diversity among children below 3 years, adolescent girls, pregnant & lactating mothers

Society for Nutrition, Education & Health Action (SNEHA)

Sustaining A Continuum Of Care

SNEHA works with communities in some of the most densely populated urban slums of Mumbai. To overcome COVID-19 challenges for MCHN, SNEHA undertook tele-counselling services to pregnant women and lactating mothers and also conducted training programmes for frontline health and childcare workers to ensure delivery of maternal and child health and nutrition services.

Outcomes

- 245 trained community volunteers of SNEHA
- ~2,500 pregnant women received maternal health services



Face masks supplied to UPHC-Sathe Nagar, Mankhurd



Awareness session during MCH event at Mankhurd

COVID-19 and Delivering Cancer Care

1.

Challenges Faced

Lack of Access:

- Patients could not access life-saving surgeries and treatment during the lockdown
- Chemotherapy treatments and follow-ups were postponed
- Decrease in patient footfall for cancer care and overall cancer services

2.

Expected Long Term Impact

Cancer patients are more vulnerable to COVID-19 infection due to co-morbidity

Disruption in continued access to treatment shall result in treatment completion and survival rate

3.

Measures Taken

Tailored management at hospitals

- Reducing out-patient foot falls at OPDs by 50%,
- Screening at hospital entrances for COVID-19
- Comprehensive tele-consult facilities set up for follow ups and to prevent avoidable physical presence

2020-21 Cancer Care Highlights

Challenges:

COVID-19 has disproportionately affected patients with cancer through disruption in the delivery of cancer care services and the adverse effects of patients who contract COVID-19.



Our Response:

Supported safeguarding healthcare workers with COVID-19 safety measures, safe access for early diagnosis and communication of accurate information on safe practices in view of COVID-19 outbreak

Our Support

Tata Memorial Centre

Comprehensive Paediatrics Care

We supported ~400 children, to complete their prescribed cancer treatment at three TMC hospitals at Mumbai, Guwahati and Varanasi

Outcomes

- Expected to achieve **97%** treatment completion rate and **~80%** treatment success rate



Team at TATA Memorial Hospital



CO2 Laser for Cancer Surgery



Elisa Reader for Cancer Diagnosis

COVID-19 and Delivering Other Healthcare Programmes

Eye care and treatment of Congenital Heart Defects

Challenges:

- **Only emergency surgeries allowed:** All routine elective surgeries including eye care and paediatric heart surgeries were postponed until the situation normalised
- **Increased Costs:** Hospitals incurred additional expenses for PPEs for staffs, doctors and nurses vis-à-vis lower hospital revenue due to reduced footfalls for OPD/ walk -in patients
- **Rural communities:** Patients were affected due to disruption in outreach services, surgeries and follow-ups.



Our Response:

While ensuring accessibility, it was also necessary to support safe models for the resumption of surgeries during the COVID-19 pandemic and ensure that strict infection control measures are in place

Congenital Heart Defects:

- Appropriate COVID-19 protection protocols maintained at Hospitals during surgeries

Our Support

Genesis Foundation
Saving Little Hearts

Support for heart surgeries for a minimum 145 underprivileged children with Congenital Heart Defects

Outcomes:

- **98%** children including high risk cases Congenital Heart Defects achieved better treatment outcomes and survived after surgery



Medical Screening for Children with Cardiac ailments



Diagnostics for screening of congenital heart defects

05.

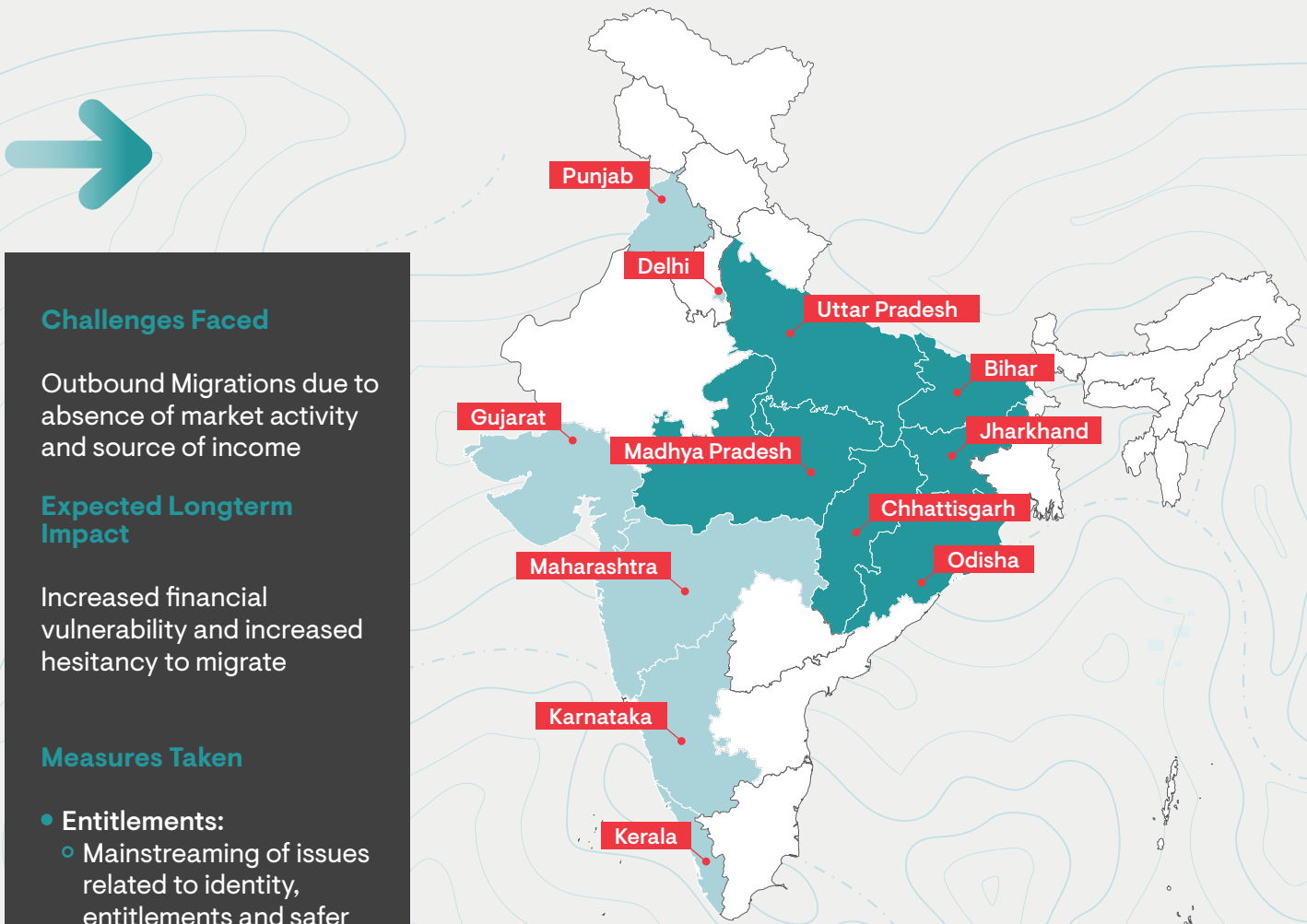
Livelihoods

Creating Opportunities for Women and Construction Workers



The economic stress induced by the COVID-19 lockdown has caused inexpressible disruptions to communities working in the informal sector across the country. Women, construction and daily-wage workers suffered significantly. We witnessed a staggering fall in livelihood opportunities during the first few months of the lockdown, leading to an increase in outbound migration, financial distress and pervasive unemployment – leading to financial distress among communities.

Key Migration corridors:
Source (native) & Destination (work)



Challenges Faced

Outbound Migrations due to absence of market activity and source of income

Expected Longterm Impact

Increased financial vulnerability and increased hesitancy to migrate

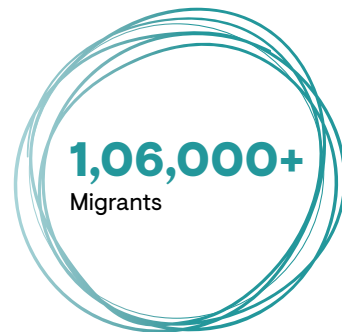
Measures Taken

- **Entitlements:**
 - Mainstreaming of issues related to identity, entitlements and safer work conditions
 - Validated databases to ensure effective provision of benefits
- **Formal Agreements:** Formalisation of employment terms to ensure increased social security

Source Regions →	Destination Location
Bihar	Delhi, Punjab, Maharashtra
Uttar Pradesh, Jharkhand	Delhi, Maharashtra
Odisha	Maharashtra, Gujarat, Karnataka, Kerala
Chhattisgarh	Karnataka, Kerala
Madhya Pradesh	Karnataka, Maharashtra

2020-21 Livelihood Highlights

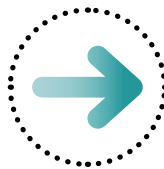
Against the backdrop of COVID-19, the Foundation pivoted its livelihood focus towards relief activities for vulnerable communities affected due to the pandemic, helping them gain access to entitlements and livelihood generation opportunities.



Migrant Workers

Challenges:

Migrant workers faced multiple hardships due to the COVID-19 imposed lockdown. With factories and workplaces shutting down, migrant workers had to deal with the loss of income, food shortages and uncertainty.



Our Response:

Our mid to long term focus have been on addressing vulnerable communities through an ecosystem approach that aims to provide employment opportunities for migrant workers and build dignified employment practices and working conditions.

Our Support

Migrants Resilience Collaborative (MRC)

Safe Migration and Worker Protection

The Foundation has supported the work of Jan Sahas Foundation's Migrant Resilience Collaborative (MRC) in Bangalore and Mumbai (including extension locations of Thane, Palghar and Raigad)

Outcomes

- 27 District Migration Resource Centres (DMRC) opened
- 52,390 migrant workers reached



← continued from **Migrant Workers**

United Way Of Mumbai

United for Employee Rights

Many migrant workers did not have the option of returning to the big cities. To address this specific community, the Foundation supported 3 Rozgar Dhabas (village information exchange centers) to ensure migrants in select districts of Bihar and Uttar Pradesh were able to avail of their basic entitlements, existing government schemes and provided options to find employment close to their villages and home towns.

Outcomes

- Total reach – **9,400** registrations
- **888** - Number of people linked to government schemes
- No of disabled registered for ration & equipment schemes – **712**

“The covid-19 crisis has been worse for vulnerable communities, who had to choose between safety and survival. Our support has been to provide emergency relief and drive better socio-economic outcomes by focusing on their safety, security and mobility”



One to one interaction



Registration for government schemes



Rozgar Dhabas



Community awareness for SHGs

Women Livelihood

Challenges:

Women migrant workers were disproportionately affected during the lockdown, posing a serious threat to women livelihood opportunities and increasing the gender livelihood gap, especially in informal and rural sector.



Our Response:

Our focus has been to provide alternative employment opportunities for women and migrant workers.

Our Support

Anudip Foundation for Social Welfare

Digital Empowerment of Young Women

The Foundation set up 3 centres across two states i.e West Bengal (Durgapur and Bally) and Karnataka (Bengaluru) to empower the unemployed women and youth through digital skills-development and sustainable employment opportunities.

- Project targeted marginalized youth and with 70% women living below poverty level
- Youth and women between 18 – 25 years with Senior Secondary (Class 12th pass), or unemployed graduates; mostly school/college dropouts or have completed schooling with very little or no livelihood skills.
- Mobilisation undertaken through Block level meetings, college seminars, tie-ups with high schools, tuition centres, advocacy campaigns, social media campaigns including Facebook Live Sessions, and Webinars on new-economy skill-sets, were effective tools to maximize audience engagement and build brand loyalty
- Blended Learning System - The programme used a Blended Learning methodology keeping the student is engaged in smart learning experiences through a user-friendly learning management system (LMS).
- A digitized curriculum with customized content, multimedia, video modules, and games, creates an immersive professional development program generating digitally trained candidates outcomes.

Outcomes:

- Placement linkages through a dedicated Corporate Relationship Cell (CRC) closely works with a network of **300+** corporate tie-ups across sectors and locations for the successful placement of candidates.
- **535** At-risk Youth and Women Trained
- **361** Placed Candidates Successfully Employed
- **70%** Women Impacted
 - Increase in average monthly income by **43%** in Bengaluru and **92%** in West Bengal
- Employers include Amazon, Netscribes, Cognizant, Wipro, TCS etc



Nafeesathul Misiriya M A,
26 Years BTM Layout, Bangalore
Digital Inclusion of Young Aspirants (DIYA)

“I never ever thought that I would be working in BYJU’s, one of the leading ed-tech companies in the country. My parents with a very-low-income background did not understand on the type of training I was under-going when I enrolled for digital marketing course at Anudip supported by HT. Parekh. I learnt SEO, SMO, key-word optimizations, content creation, and social media along with soft skills and English Communication - all of which were beyond my affordability from a premier or private institute. Post my assessment, I got placed as an Inside Sales Executive at BYJUS with a decent salary of INR 40,000/- per month and earn 3x my family income. I can proudly say that I am the first one in the family to gain a white-collar job. Gratitude to Anudip and HT.Parekh for helping youth from low-middle-class families with opportunities and possibilities.”

← continued from [Women Livelihood](#)

Yuva Mitra

Shaping Sustainable Development



The Foundation supported rural livelihood enhancement projects, created farm to market linkages through establishing Farmers Producer Companies and Livestock - primarily goat rearing based programmes for rural women.

We supported 50 villages in Maharashtra for goat-rearing based livelihoods project to support 4,200+ women.

Outcomes

- **5X** increase in average income
- Goat herd sizes have **doubled**
- Livestock mortality rate has decreased and improved market linkages for goat milk, cheese and manure.



Assistance of field level veterinary services



Veterinary services

06.

Persons with Disabilities

Improving the Quality of Life for
Persons with Disabilities



Persons with disabilities were disproportionately impacted due to COVID-19. Those dependent on support for their daily living found themselves isolated and unable to cope during lockdown measures. Barriers for persons with disabilities in accessing healthcare services were intensified, and they continue to face barriers in accessing livelihood and income support as well as participating in online forms of education



1. Challenges Faced	2. Impact on Grantee Partners	3. Measures Taken
<p>Reach and Access: Fear of COVID-19, limitations on physical delivery of services for health, education and livelihoods needs of PwDs impacted</p> <p>Possible regression in academic, social and independence linked skills of PwDs</p> <p>Financial Inclusions: Limited number of jobs and fears associated with mobility impact inclusion into the workforce</p> <p>Low Prioritization for sharing learning devices with Children with Disabilities</p> <p>Lack of mobility: Access to essentials dependent on support</p>	<p>Programmes Evaluation: Pivot to the online format</p> <p>Programme Accountability: Building in delays and reduced reach due to closure of physical centres</p>	<p>Continuity of Support: To ensure that service delivery was not impacted and could be continued under COVID-19 safety norms</p> <p>Evaluate Programmes Differently: Engagement and empowerment of caregivers became key to service delivery</p> <p>Relevant Content: Creation and dissemination of content was focused on education and mental health needs of caregivers</p> <p>Emerging Livelihood Opportunities: Focus shifted to the e-commerce IT/ITES and BFSI sectors for hiring of PwDs</p>

2020-21 Persons with Disabilities Highlights

This year we continued to focus on increasing access to education and healthcare services and enabling skilling for relevant livelihood generation opportunities. Additionally, we introduced a new focus area – Ecosystem Interventions that focussed on relevant research and the creation of Public goods for PwDs with the aim of fostering social inclusion.



Enabling Services – Healthcare and Education for PwD

Challenges:

COVID-19 created a different level of complexity and levers of exclusion for Persons with disabilities; one for having a disability and second for not having accessibility while facing social isolation.



Our Response:

Focus on increasing access to enabling services in health and education and continue support toward critical and necessary services through digital and COVID-19 safety protocols.

Our Support

Association of People with Disability (APD)

Creating Inclusive Learning Centres

APD as an inclusive school and caters to children with different disabilities and learning levels. As a response to closure of school, the Foundation supported APD to deliver its programme through online modes and digital tools. One such tool used included PlayAblo a gamified learning app which used quiz-based games to achieve the objectives of assessment and reinforcement of concepts. Coupled with the curriculum, it gives children quizzing levels that align with their level of learning. APD continued to undertake regular formative and summative assessments for its students to map their progress against identified development and academic goals.



← continued from **Enabling Services**



Outcomes

- **211** children enrolled and shown **100%** of retention and
- **195** Children have shown improvement in Reading, writing and Arithmetic (3Rs) and achieved the set goal as followed, Reading - **64%**, Writing - **53%** and Arithmetic - **48 %**.
- **169** Students have enhanced functional independence through mobility and hearing aids and actively participated in curricular and co-curricular activities both through online and face to face set up.

Sol's Assessment and Remedial Centre (Sols Arc)

Transforming Special Education

Supported “Project Samavesh” wherein our partner Sol’s Arc is working in close partnership with the Tamil Nadu government to further the cause of inclusion of children with disabilities in mainstream education. Sol’s Arc piloted Red Flag an app to help teachers screen children for disabilities by training of over 1,400 teachers in Tamil Nadu. As the technical partner for inclusion in the State’s Foundational Learning Mission (FLN), Sols Arc ensured that the curriculum that is being rolled out is inclusive and takes into account the needs of children with special needs.

Key Highlights of the Pilot Analysis

- Increased correct assessment of the risk by **19%** points among the participants
- A total of **184** recommendations to the state were provided for English and Math FLN Content and **132** recommendations were provided on teacher inclusive classroom practices.



Project Samavesh: Sol’s ARC presentation to Tamil Nadu State Government



Project Samavesh: Pilot of RedFlag App with Teachers

Financial Inclusion

Challenges:

COVID-19 has decreased economic resilience for PwDs even further. Those employed may find it difficult to work and even face losing their income and job.



Our Response:

Through our partners, endeavoured to adopt the online model to continue the skilling programmes in the virtual format. Skill trainings and workshops were undertaken through customised learning management systems to ensure PwDs are continuously skilled and have an opportunity to be employed.

Our Support

Mitti Social Initiatives Foundation

Abilities not Disabilities

Mitti Social Development Foundation transitioned from their cafe's in corporate offices to cafes in hospitals and cloud kitchens focussing on meal deliveries. We have supported the training of 50 youth with disabilities with Mitti.

A few of our supported trainees



Manjula



Role - Works in the Kitchen & service

Disability - Right Leg Mobility

Skills - Strong leadership, good work ethic, enthusiastic and fast learner and creative

CTC: ~ INR 14,000+



Raju



Role - Beverage and refreshments

Skills

- Responsible for making all refreshments, tea and coffee
- Makes all the Chocolate items
- Undergoing Barista training

CTC: ~ INR 14,000+



Shakir



Role - Packing & Logistics

Disability - Motor Disability

Skills

- Packing
- Logistics

CTC: ~ INR 8,000+



Youth4Jobs Foundation

Creating Inclusive Workplaces

We have supported partners who have developed their own learning management systems to train youth with disabilities online. The digital format of training has also enabled partners to train youth from rural locations.

Youth 4 Jobs has re-looked at every aspect of their programme from using social media and virtual career fairs for mobilisation to using training platforms such as Google Classrooms or Moodle Platform for training to reaching out to potential employers through online volunteering or mentoring. The impact of limited employment opportunities has been significant.

Ecosystem Interventions

Challenges:

The negative impacts of COVID-19 on Person with Disabilities has made it even more critical to find solutions to issues hindering the inclusion of PwDs.



Our Response:

The Foundation has focused on addressing multiple external factors that can impact the quality of life of a PwD, support interventions that builds enabling ecosystems and drive greater awareness.

Our Support



Nayi Disha

Supporting people with intellectual or developmental disabilities

In response to the increasing amount of support required by caregivers of children with special needs, especially during COVID-19, the Foundation supported Nayi Disha’s Multi Channel helpline. The helpline on an average addresses 150 queries in a month. The helpline focussed on linking parents to the right resources, help in assessments and link them to parent networks in respective cities.

Stories of Change

Nayi Disha’s counselling team were able to help a mother of 2 year baby, who was diagnosed with Autism, find a training program that focused on early childhood intervention, speech, and communication. The training helped the mother identify and learn the importance of early intervention, prepare her and work on the child’s future development from the confines of her home in a remote region Begusarai.

Foundation for Promotion of Sports (OGQ)

Powering Indian Athletes

We supported 18 para athletes in contention to qualify for the Tokyo Olympics 2020, which on account of the COVID-19 was postponed to next year and affected their training.

OGQ worked around this hurdle and leveraged technology along with safety protocols to continue their support. They monitored daily wellness through an Athlete Monitoring app, conducted coaching through video calls, online nutrition and Psychology sessions, provided equipment to train at home, facilitated safe travel and bio bubbles to participate in training camps and facilitated vaccinations of Tokyo bound athletes. Through these efforts 16 para athletes were part of the Indian contingent at the Tokyo Paralympics. 8 of the athletes succeeded in securing 9 medals.



OGQ enabled Devendra to achieve his optimal weight with focused nutrition & strength & conditioning support which helped him throw his personal best at the Tokyo Paralympics

07. Protecting Ecosystems

Making Cities Livable for All



COVID-19 has uncovered the linkages and relationships between humans and the ecosystem. The reduction of human and economic activity caused by COVID-19, except for movement of essential goods and services, has had resulting effects on the natural environment. Studies have found that air quality improved, GHG emissions reduced, pollution and pressures eased allowing for the restoration of ecosystems. However, there were other new negative effects including increase in medical waste, increase in use and disposal of protective gear such as masks, PPE etc.

COVID-19 is proof of the risk from transference of infectious diseases from animals to humans. This could be due to increasing habitat loss caused by deforestation for agriculture or resources for human consumption. Climate change has triggered animal migration to cooler habitats furthering the risk of transferring diseases to humans,

Aiming to reverse the damage, we have expanded our focus to include the environment and address threats to its ecosystems.

By focusing on the below three areas, our aim is to build urban resilience and empower cities to effectively combat environmental stresses, as well as complement our efforts across our key sectors





Our focus is aligned to the emerging concept of Circular Cities, a new paradigm that focuses on conserving and putting back material and energy flows into the production-consumption system

Our work seeks to

Repair and Restore

Achieve balance between economic and social development of human habitats along with the protection of the environment, equity in employment, shelter, basic services, social infrastructure and transportation.

Align to Government of India Efforts

National Mission on Sustainable Habitats is a component of the National Action Plan for Climate Change (NAPCC), implemented under the Ministry of Housing and Urban Affairs

Exemplify Sustainable Habitats

Demonstrate effective and innovative models that equip cities to combat environmental challenges and improve quality of life.

2020-2021 Protecting Ecosystems Highlights

Center for Environmental Research and Education (CERE)

Solar Electrification for Communities

We supported CERE’s Switch on Solar initiative to make the entire Police Wireless Training Academy campus in Pune solar powered. This is the central campus for the Maharashtra state police overseeing wireless operations. There are multiple buildings on the campus for training of senior police officers and which house the office of the DGP, Maharashtra. A 113kWp rooftop solar panel project was completed through COVID-19 times with requisite approvals from the DGP’s office and social distancing. Through this initiative we aim to harness positive environmental benefits in addition to reduced electricity bills.



Sr. Officers Mess



Boys hostel

← continued from **Protecting Ecosystems**



Processing Unit at the UPPAL FSTP

Samhita Social Ventures & ASCI

Citywide Inclusive Sanitation

A unique public private partnership model to promote Citywide Inclusive Sanitation

To address public health, sanitation worker safety, environment concerns and enhancing liveability in rapidly growing metropolitan cities in India, we supported an **integrated Sanitation & Waste management programme.**



Desludging operators

The Foundation together with **Hyderabad Metropolitan Water Supply and Sewerage Board (HMWSSB)** and **Administrative Staff College of India (ASCI)** supported by Samhita Social Ventures came together to design and build the first Faecal Sludge Treatment Plant (FSTP) plant in Hyderabad located within the brand new Sanitation Resource Park on the city outskirts. This pilot project is meant to be a ‘model’ to showcase to other densely populated & growing cities across India. At the city level, such a project helps governments manage the growing challenges of providing adequate sanitation services to an exploding population.

Baalipara Tract And Frontier Foundation

Conservation and Protection of our Environment

Land degradation and deforestation are threats that put the ecological balance and biodiversity at risk.

To halt the negative effects, we have supported Balipara’s Rural Futures initiative which involves forest fringe communities in the natural restoration of biodiversity through – afforestation and agro-forestry activities. These activities will help bring back the ecology of the region and create revenue and socio-economic mobility for communities as livelihood opportunities.



Mother and child at BRF Community Nursery



Jungle cleaning and plantation

08.

Investing in Pioneers for the Future

Institution Support

Healthcare

Cachar Cancer Hospital and Research Centre

Caters to the high incidence of cancer in North East region for patients from lower socio-economic background. Cachar treats ~25,000 patients including ~4,000 new patient each year. Through our support, we aim to

- Increase low-cost, high-quality cancer diagnosis and treatment services for the states of Assam, Manipur, Tripura and Meghalaya
- Support strong clinical and socio-economic research. Cachar is one of the 53 cancer registry centres in the country.



Education

Plaksha University

Plaksha University (Plaksha) is an upcoming private university located in Mohali, Punjab. Built on the principles of collective philanthropy. We have supported Plaksha in the early stage of development to foster the need for high quality technology education and industry relevant research. The key pillars of Plaksha's vision for higher education are:

- Reimagine technology education
- Drive Innovation and entrepreneurship
- Promote Cutting Edge Research
- Bring a Strong Equity Focus

Plaksha will welcome its 1st cohort for the 4 year multi-disciplinary engineering degree in August 2021.



Public Good

Antim Sanskar Seva

The 'Mata Ramabai Ambedkar Worli Crematorium' is one of the biggest in Mumbai. Considering the need and environmental impact, we have supported the redesign and refurbishment. The new facility will have solar electrification, rainwater harvesting, new sanitation facilities and waste composting to reduce its carbon footprint.



Incubator Support

Centre For Cellular And Molecular Platforms (C-Camp)

We supported C-CAMP Incubatee “Blackfrog” for the development of cold-chain management technology for vaccine storage. This technology will ensure that communities in far flung geographic areas have access to COVID-19 vaccines.

Features

- Portable, battery-powered refrigeration device that can maintain pre-set temperatures (up to -40 degrees) for up to 12 hours.
- Weighing ~5 kg, it can be carried by frontline health workers for vaccination programmes (~40 vials per box) without any spoilage



Research & Advocacy for Public Good

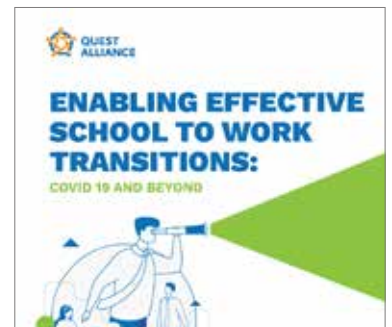
Vidhi Centre for Legal Policy

Supported research to make urban spaces more inclusive to persons with disabilities (PwDs), and raise awareness among policy-makers and the public at large, mainstream conversations around inclusive urban planning and create reforms that improve the lives of PwDs



QUEST Alliance (Quality Education and Skill Training Alliance)

Supported research study titled “Integrating 21st Century skills in the school ecosystem”, to help clarify and define 21st Century skills to facilitate a system change and bridge the disconnect between school and the fast changing work ecosystems in COVID-19 disrupted world.



About HDFC Limited

HDFC Limited is India's leading mortgage lender and a well established financial conglomerate. It has assisted more than 8 million families in acquiring their own home over the last 44 years. It has emerged as a financial conglomerate with the Group's presence in banking, asset management, insurance (life & general), real estate venture capital and education finance.

About H T Parekh Foundation

The H T Parekh Foundation is the philanthropic arm of HDFC Limited. The Foundation was established in October 2012 to commemorate its Founder, Shri H. T. Parekh's significant contribution toward the development sector in India. The Foundation works across rural and urban India and partners with organisations across the focus areas of Education, Healthcare, Protection of Ecosystems and Support of Persons with Disabilities (PwDs).



HT Parekh
FOUNDATION

An Initiative by



WITH YOU, RIGHT THROUGH

HDFC House,
H.T Parekh Marg,
165-166, Backbay Reclamation,
Churchgate, Mumbai - 400020.

www.htparekhfoundation.com